

A Winning Performance of Beauty, Strength & Economics.



Precast/Prestressed
Concrete Institute

ETS School of Technology,
Student Residence

Montreal, Canada

Architect:

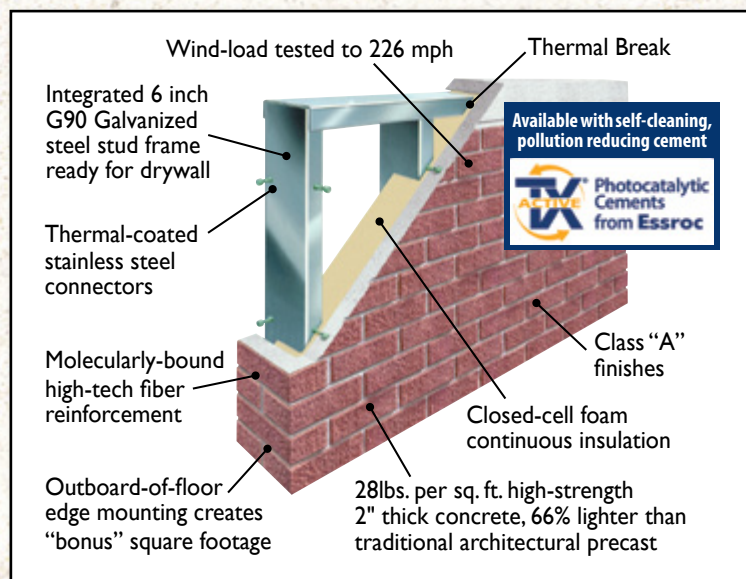
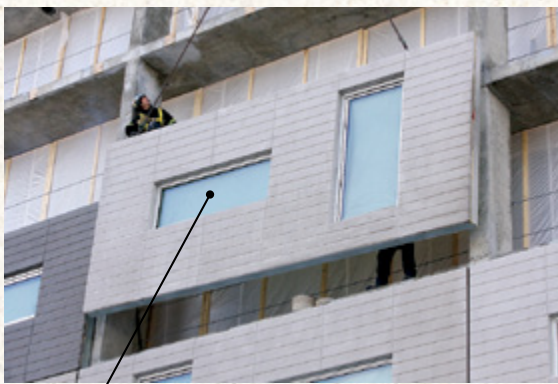
Régis Côté et Associés

Precaster: BPDL

For more information
on this project, visit:
SlenderWall.com/ets



Photo: Serge Jacques



- 28 lbs./sq.ft. = Lower Structural Costs, Fast Installation
- One-Call Building Envelope Responsibility
- Factory-Applied Closed-Cell Foam Insulation
- Factory-Installed Windows
- H2Out, Pressure Equalized Sealant Joint Rainscreen

ULTRA HI-PERFORMANCE
SLENDERWALL®

Architectural Precast Concrete/Steel Stud Building Panels

www.SlenderWall.com • 1.800.547.4045



SLENDERWALL® is a product of Easi-Set® Worldwide, a licensor of precast products, with 68 licensed producers in 41 states & 10 countries. A subsidiary of publicly traded Smith-Midland, Delaware [SMID] ©2014